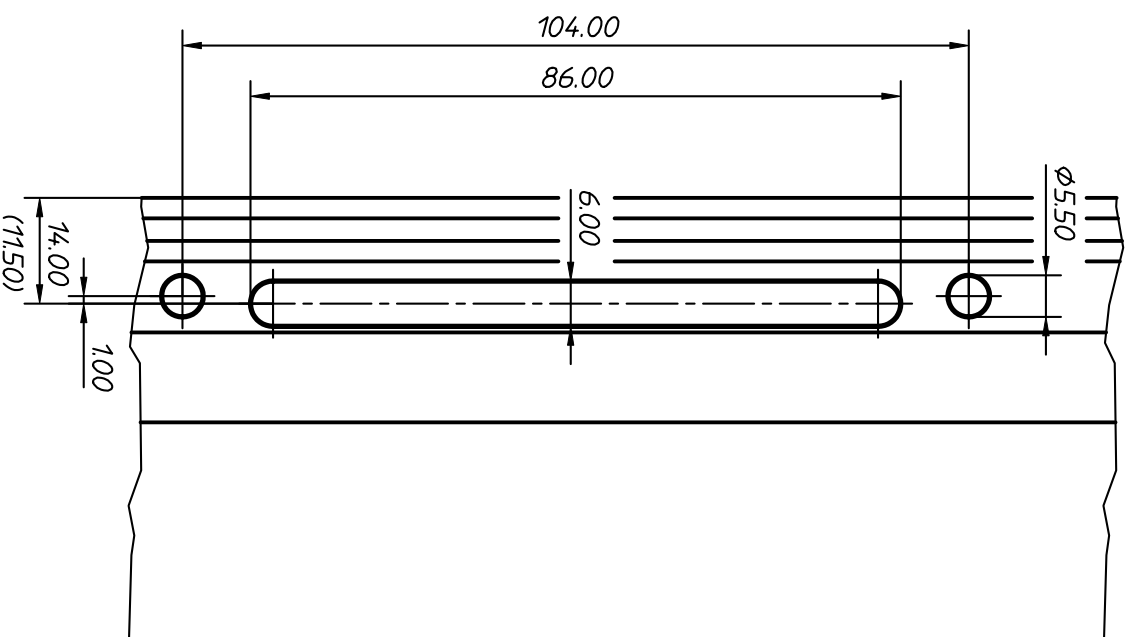
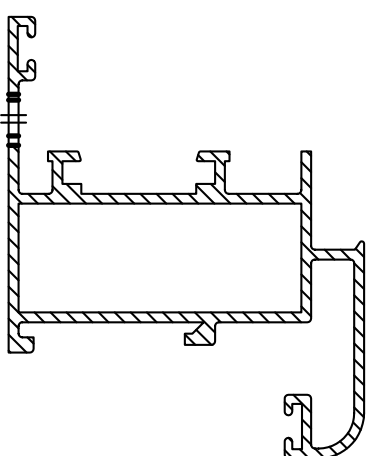


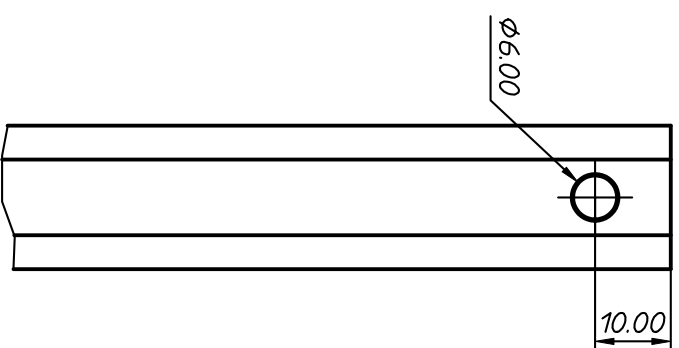
OPERACION A

- | | |
|------------------|------------------|
| * NC18339 (3838) | * NC18340 (3839) |
| * NC18483 (3894) | * NC18484 (3895) |
| * PERFIL 2423 | * PERFIL 3266 |
| * PERFIL 3716 | * PERFIL 3687 |
| * PERFIL 3616 | * PERFIL 3657 |
| * PERFIL 3717 | * PERFIL 3703 |



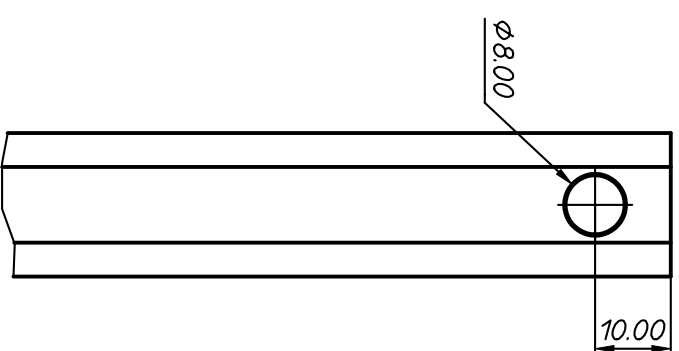
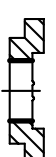
OPERACION B

- * NC1845 (900998)



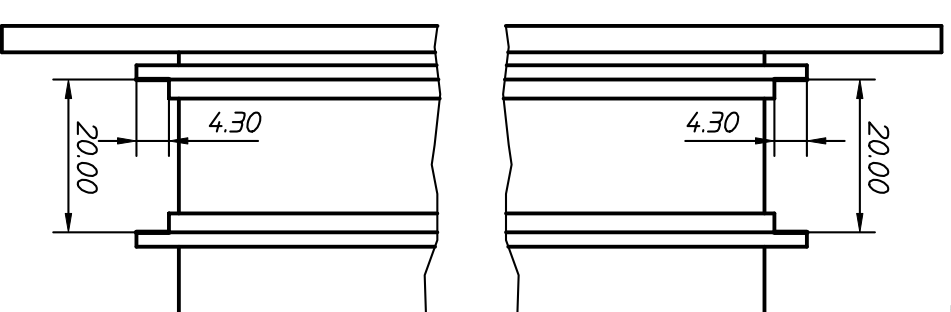
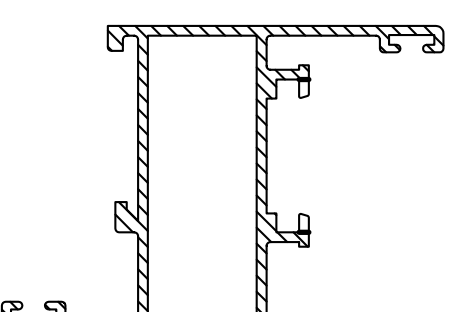
OPERACION C

- * NC1845 (900998)



OPERACION D

- | | |
|------------------|------------------|
| * NC18339 (3838) | * NC18340 (3839) |
| * NC18483 (3894) | * NC18484 (3895) |



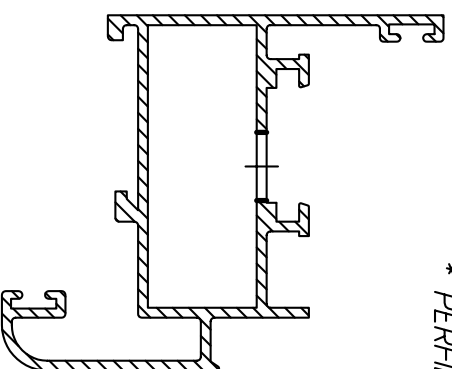
NOTA.- PARA REALIZAR LA OPERACION D LOS PERFILES DEBERAN MECANIZARSE CORTADOS A INGLETE.

Conformidad del cliente

Marca	Denominacion		Referencia	Cont.	Material	Dimensiones
industrias Z	FECHA	FECHA	DESTINO	DENOMINACION		
LANZAMIENTO	09-03-05	09-03-05	A-4000/IN4PN	MATRIZ ABISAGRADA A-4000/IN4PN		
PEDIDO	DIBUADO		ESCALA	MATERIAL		
CANTIDAD	COMPROBADO		-	OPERACIONES		
				REFERENCIA		
				A-4000/IN4PN		

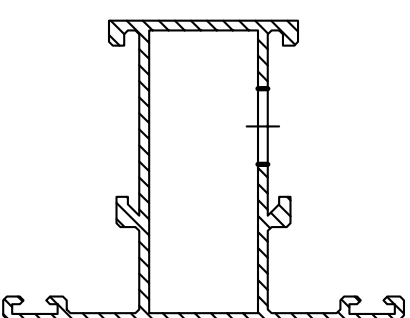
OPERACION E

* NC18339 (3838)	* PERFIL 3716	* NC18340 (3839)	* PERFIL 3687
* NC18483 (3894)	* PERFIL 3717	* NC18484 (3895)	* PERFIL 3703
* NC17300 (3422)	* PERFIL 3616	* NC16824 (3264)	* PERFIL 3657
* PERFIL 3423	* PERFIL 3615	* PERFIL 3266	* PERFIL 3655
* PERFIL 3707		* PERFIL 3969	
* PERFIL 3968			



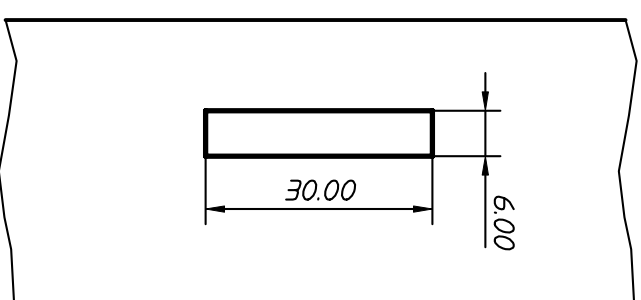
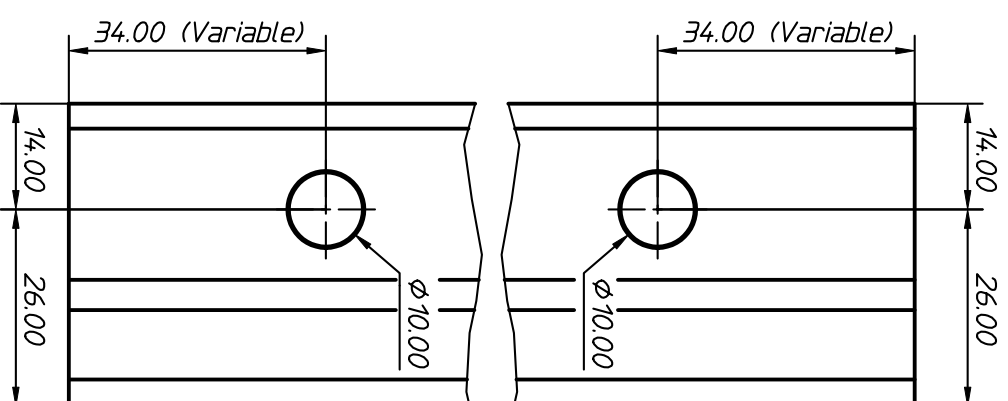
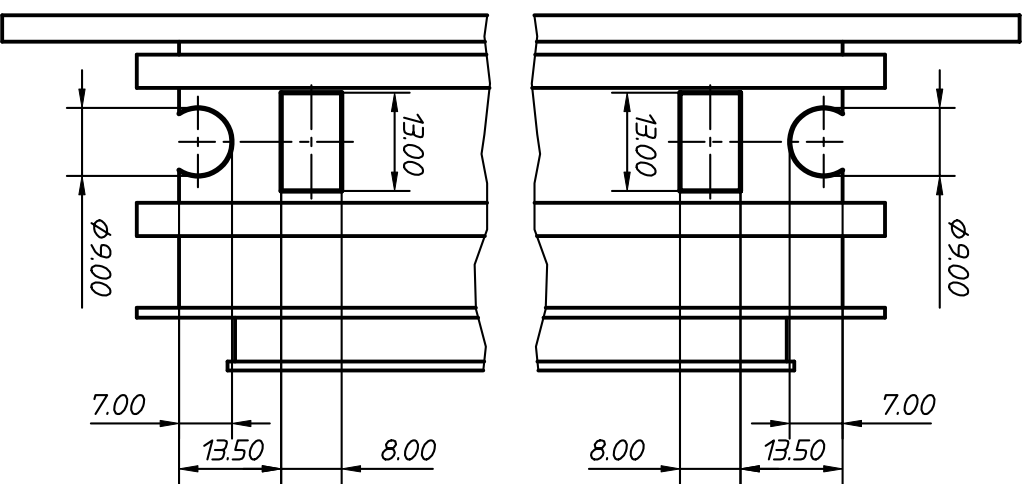
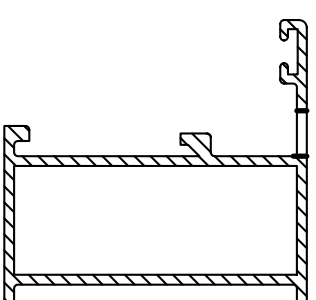
OPERACION F

* PERFIL 3424	* PERFIL 3265
* PERFIL 3617	* PERFIL 3656



OPERACION G

* NC17300 (3422)	* NC16824(3264)
* PERFIL 3707	* PERFIL 3655
* PERFIL 3615	



Conformidad del cliente

NOTA.- PARA REALIZAR LA OPERACION E LOS PERFILES DEBERAN MECANIZARSE CORTADOS A INGLETE.

Marca	Denominacion		Referencia	Cont.	Material	Dimensiones
industrias DZ	FECHA	FECHA	DESTINO	DENOMINACION		
LANZAMIENTO	09-03-05	09-03-05	A-4000/IN4PN	MATRIZ ABISAGRADA	A-4000/IN4PN	
PEDIDO		DIBUADO	ESCALA	MATERIAL	OPERACIONES	REFERENCIA
CANTIDAD		COMPROBADO	—			A-4000/IN4PN